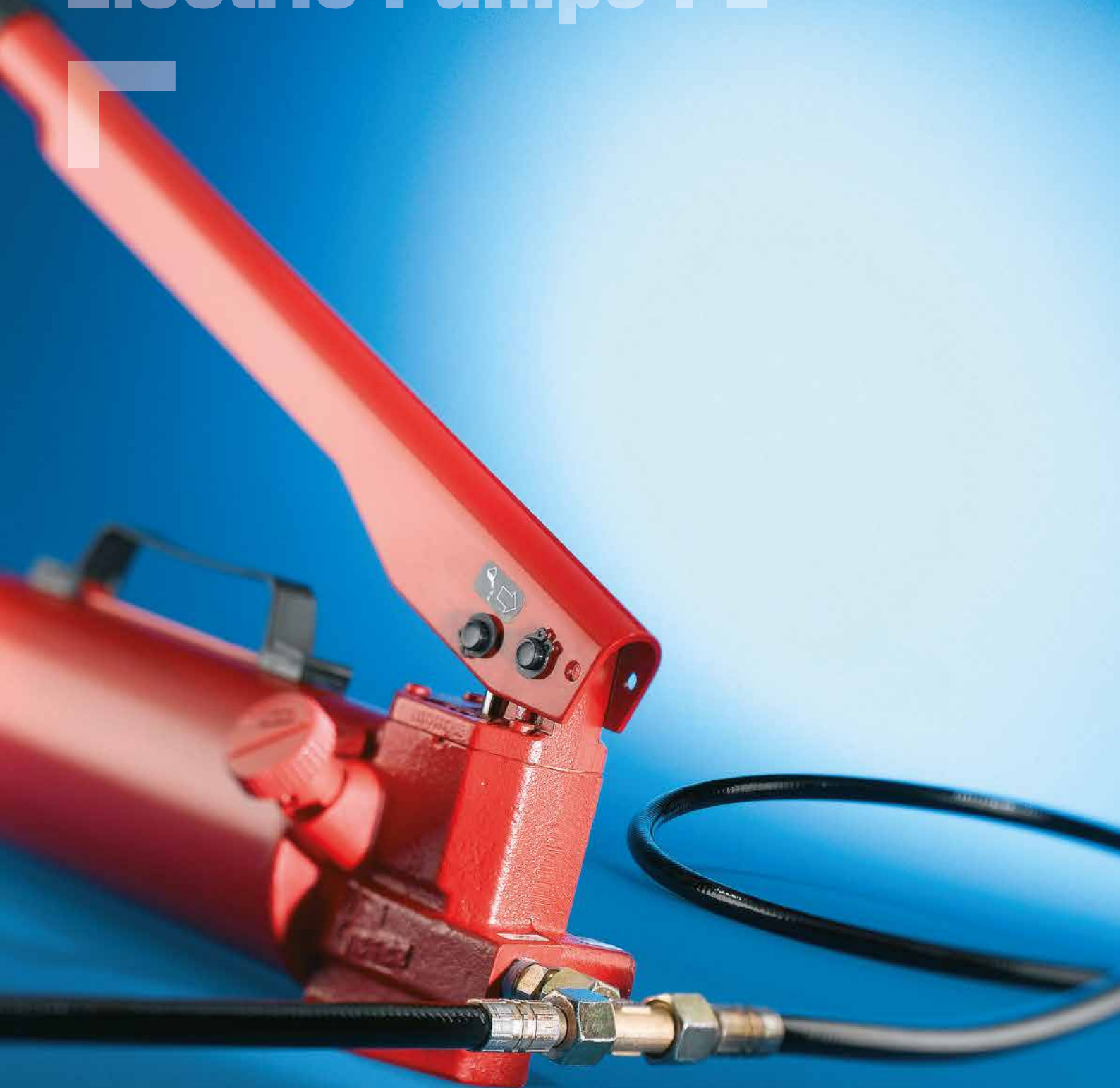


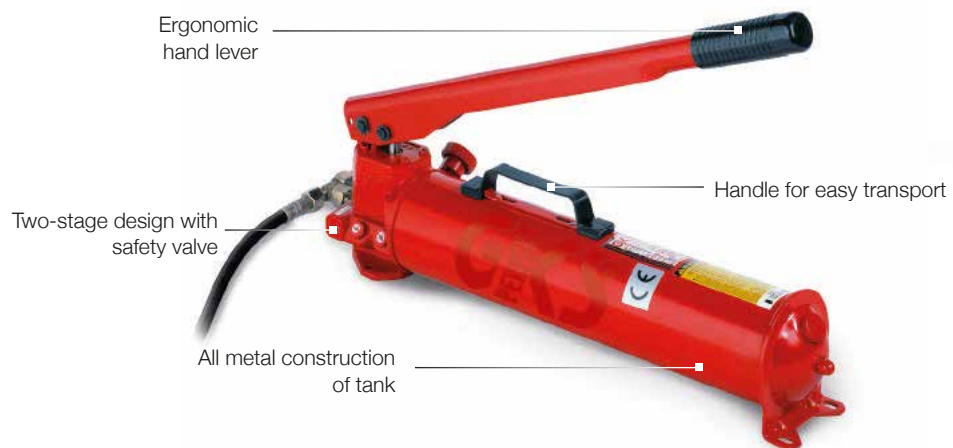
Hydraulic Hand Pumps PV and Electric Pumps PE



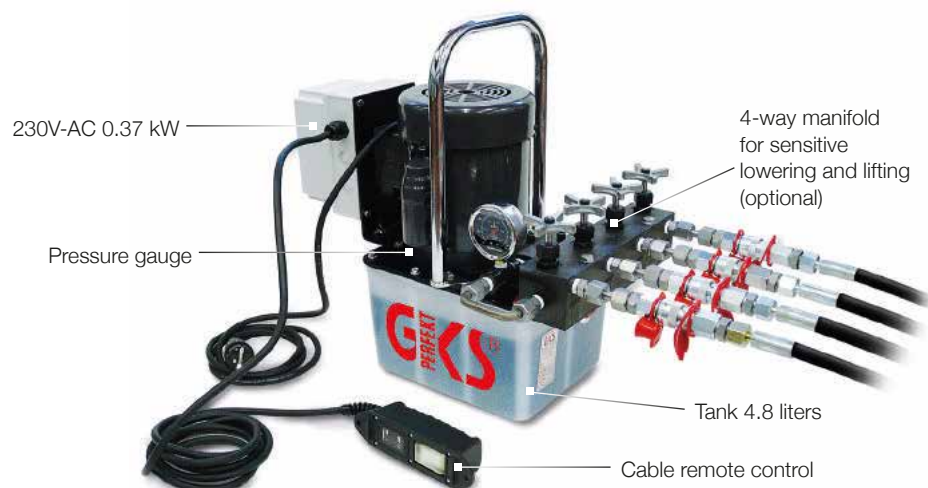
Hydraulic hand pumps PV and electric pumps PE

The hydraulic hand pump PV and the electric pump PE enable the use of two or more toe jacks together. The full load capacity can be doubled or quadrupled this way. Plus, it facilitates working from the distance without risk of injury.

Hand pump PV



Electric pump PE





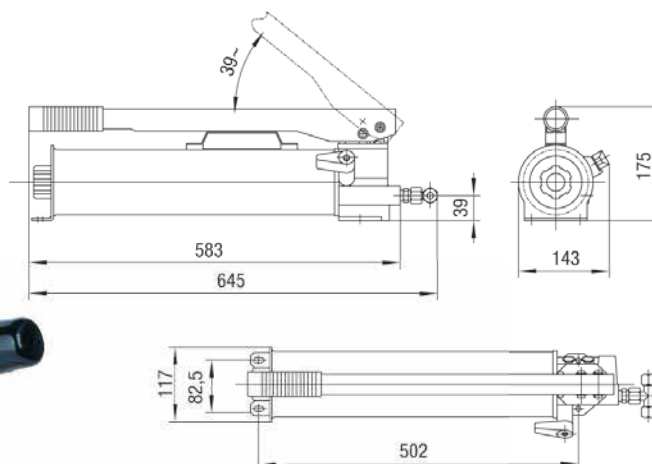
Hydraulic Hand Pumps PV

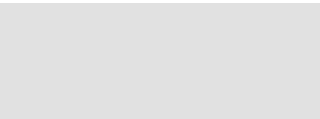
Features:

- Standard with 2 x 2 m hydraulic hoses with non-drip quick-release fasteners
- Options: Gauge, shut-off needle valve, extended hydraulic hoses

Technical data

| | PV |
|--|--|
| Item number | 10198 |
| Working pressure (preset) | 520 bar |
| Flow rate stage 1 per lift | 42 cm ³ / 30 bar |
| Flow rate stage 2 per lift | 2.6 cm ³ / 520 bar |
| Tank capacity | 2.25 l |
| Overall dimensions (L x W x H) | 645 x 143 x 175 mm |
| Tare weight in kg incl. oil fill (without hoses) | 12 kg |
| Hydraulic hose (2 m), quick-release fastener | 2 |
| For GKS toe jack models | each 2 x V5, V5-EX, V5K-EX, V10, V10-EX, V15, V20, 1 x V30-EX* |





Hydraulic Hand Pump PV- K

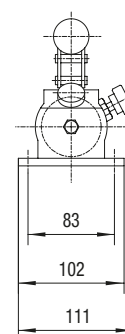
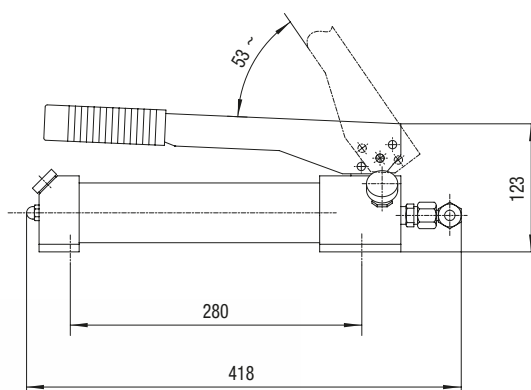
Features:

- Standard with 2 x 2 m hydraulic hoses with non-drip quick-release fasteners
- Options: Gauge, shut-off valve, extended hydraulic hoses

Technical data

PV-K

| | |
|--|-------------------------------|
| Item number | 10197 |
| Working pressure (preset) | 520 bar |
| Flow rate stage 1 per lift | 5 cm ³ / 30 bar |
| Flow rate stage 2 per lift | 1.2 cm ³ / 520 bar |
| Tank capacity | 0.33 l |
| Overall dimensions (L x W x H) | 418 x 111 x 123 mm |
| Tare weight incl. oil fill (without hoses) | 3 kg |
| Hydraulic hose (2 m), quick-release fastener | 2 |
| For GKS toe jack models | 2 x V5KK-EX, V5K-EX, V10K-EX |



Contents

Hydraulic
Toe Jacks

Pumps

Transport Trolleys

Rotating Trolleys

Transport Module
ROBOT

Wheels

Special
Transport Trolleys

Repair
Services



Hydraulic Electric Pump PE

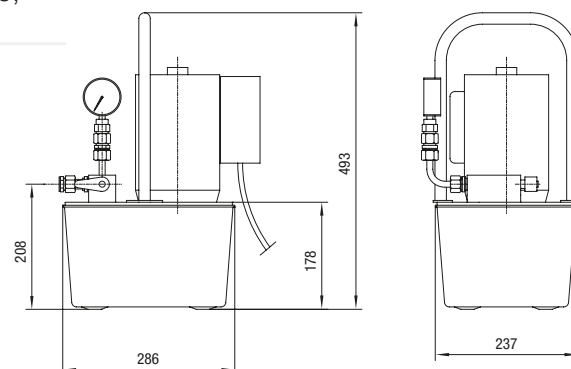
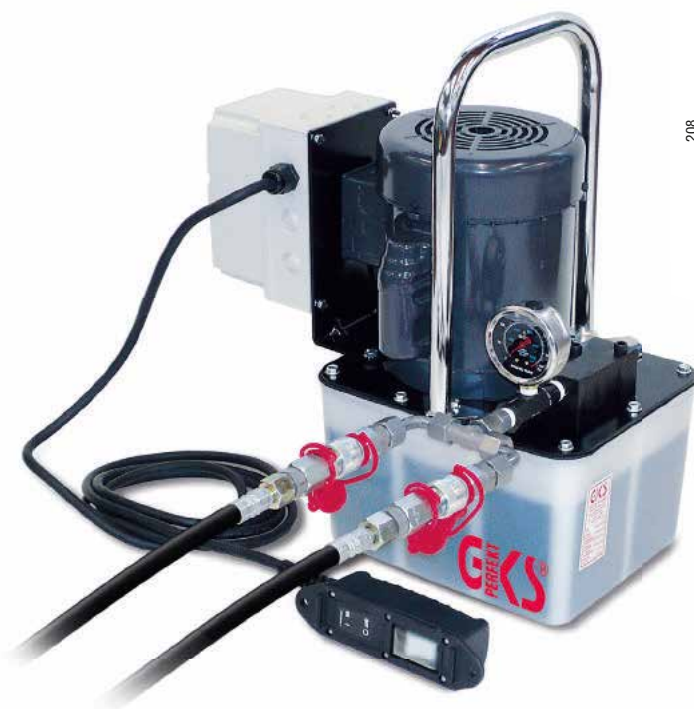
Features:

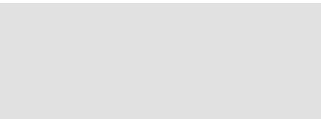
- Standard model including remote control, pressure gauge, 2/2 directional control valves for single-acting cylinders and 2 x 3 m hydraulic hoses with non-drip quick-release fasteners on both sides.

Technical data

| | PE |
|--|--|
| Item number | 10199 |
| Working pressure (preset) | 520 bar |
| Flow rate stage 1 7 bar | 2.5 l / min |
| Flow rate stage 2 520 bar | 0.3 l / min |
| Tank capacity* | 4.7 l |
| Overall dimensions (L x W x H) | 286 x 237 x 493 mm |
| Tare weight in kg incl. oil fill (without hoses) | 30 kg |
| Hydraulic hose (3 m), quick-release fastener | 2 |
| Electrical connection | 230 V / 50 Hz |
| For GKS toe jack models | 2 x V5, V5-EX, V5K-EX, G5, V10, V10K, V10-EX, V15, V20, V30-EX |

* Optional 9.5 l tank





Hydraulic Electric Pump PE2

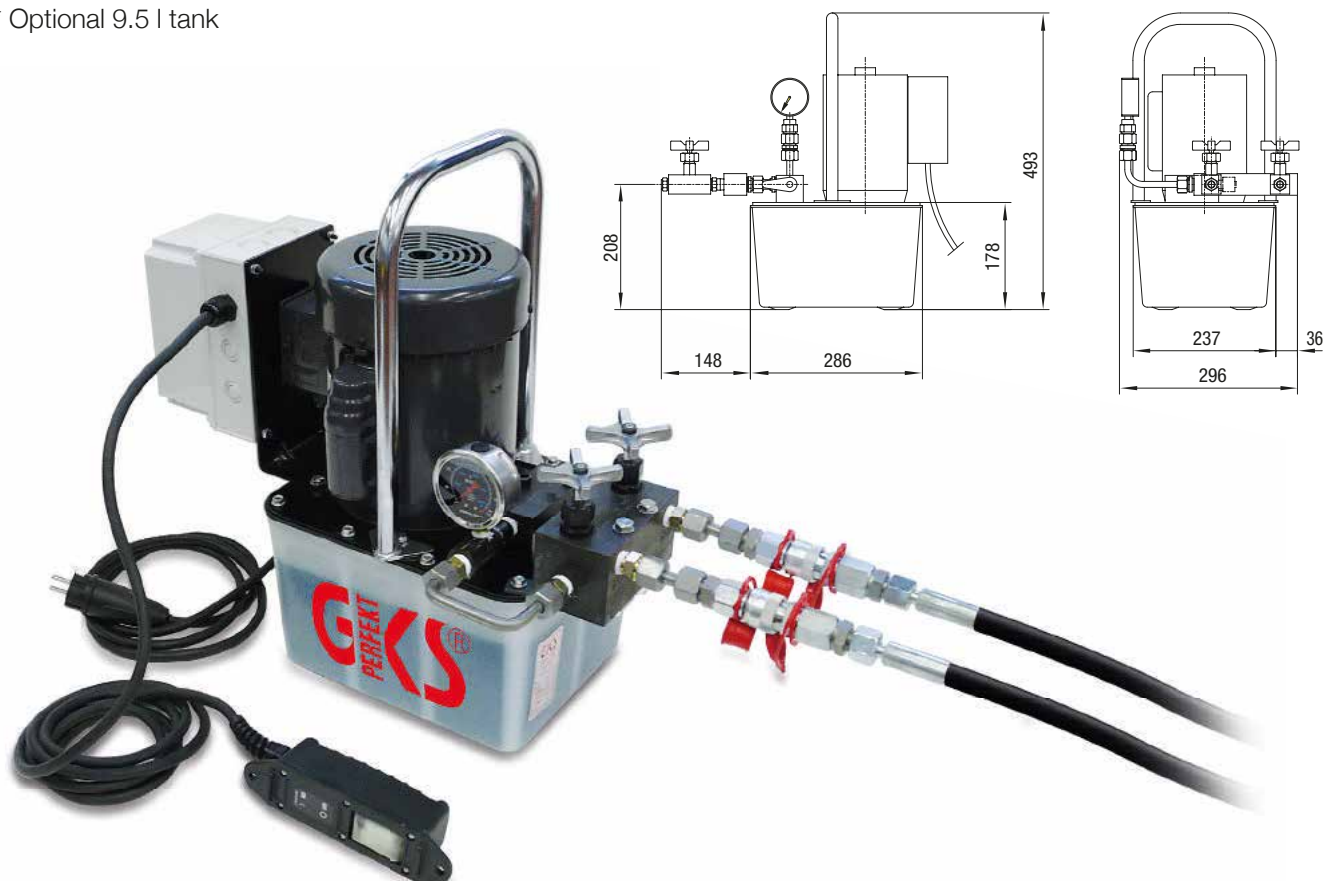
Features:

- Like PE, but with added 2-way manifold including 2 male couplings and 2 needle valves for sensitive lifting and lowering.

Technical data

| | PE2 |
|--|--|
| Item number | 13591 |
| Working pressure (preset) | 520 bar |
| Flow rate stage 1 7 bar | 2.5 l / min |
| Flow rate stage 2 520 bar | 0.3 l / min |
| Tank capacity* | 4.7 l |
| Overall dimensions (L x W x H) | 434 x 296 x 493 mm |
| Tare weight in kg incl. oil fill (without hoses) | 35 kg |
| Hydraulic hose (3 m), quick-release fastener | 2 |
| Electrical connection | 230 V / 50 Hz |
| For GKS toe jack models | 2 x V5, V5-EX, V5K-EX, G5, V10, V10K, V10-EX, V15, V20, V30-EX |

* Optional 9.5 l tank



Contents

Hydraulic
Toe Jacks

Pumps

Transport Trolleys

Rotating Trolleys

Transport Module
ROBOT

Wheels

Special
Transport Trolleys

Repair
Services



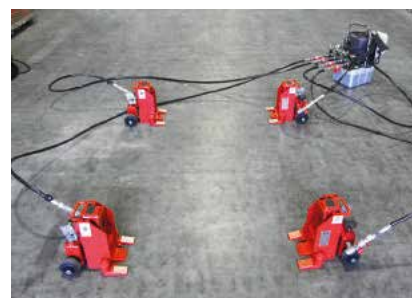
Electric Pump PE4

Features:

- Like PE2, but with 4-way manifold and 4 x 3 m hoses.
- Optional: extended hose lengths, bigger oil reservoir (9.5 l) *

Technical data

| | PE4 |
|--|---|
| Item number | 13592 |
| Working pressure (preset) | 520 bar |
| Flow rate stage 1 7 bar | 2.5 l / min |
| Flow rate stage 2 520 bar | 0.3 l / min |
| Tank capacity* | 4.7 l |
| Overall dimensions (L x W x H) | 434 x 296 x 493 mm |
| Tare weight in kg incl. oil fill (without hoses) | 44 kg |
| Hydraulic hose (3 m), quick-release fastener | 4 |
| Electrical connection | 230 V / 50 Hz |
| For GKS toe jack models | 4 x V5, V5-EX, V5K-EX, G5, V10, V10K, V10-EX, V15, V20, 2 x V30-EX |



* Optional 9.5 l tank

