

Remote Operated Battery Operated Transport Modules ROBOT 10 / 20 / 40



Remote Operated Battery Operated Transport modules ROBOT 10 / 20 / 40

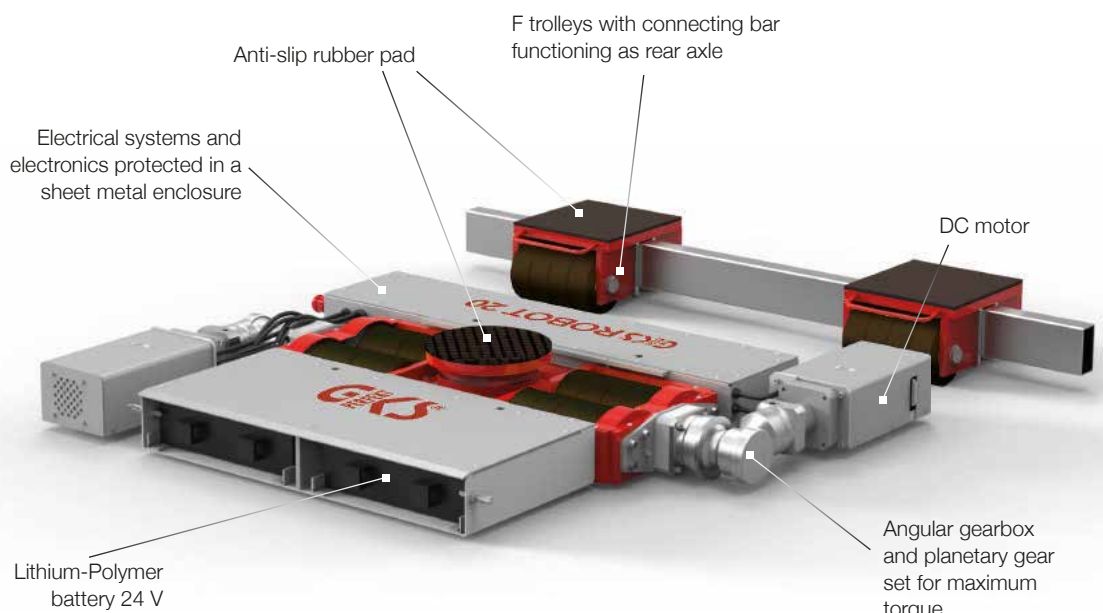
The Remote Operated Transport modules ROBOT 10 / 20 / 40 are used for on-site heavy transports of up to 40 tons or for assembly logistics and can be moved autonomously.

The built-in Lithium-Polymer batteries make operating times of up to 240 minutes possible. The ROBOT is designed for simultaneous steering and driving. The ROBOT is delivered ready-to-use and does not require external power sources.

Our well-proven 3-point supports, consisting of the L-ROBOT and the F trolley as the “rear axle”, facilitate the safe and effortless transport of loads with just the push of a button.

We are happy to demonstrate our ROBOT models either in our factory here or on-site at your facility anywhere in Europe. These transport modules can be built to your specifications, to be used for applications including with platforms, for cleanroom equipment, etc. We can solve any transport challenge. We enjoy a good challenge!

Transport Module ROBOT-20



We have more than 100 testimonials from global companies using our ROBOTS to their complete satisfaction.



Transport Module ROBOT-10 ►► For heavy loads up to 10 tons

Features:

- Operating times depend on the loads and the number of starts and stops
- Lithium-Polymer batteries (easily recyclable) for safety; less risk in case of malfunction
- Easy battery replacement thanks to a plug-in system, even under load
- Scope of delivery includes a standard charger (10 hours charging time)



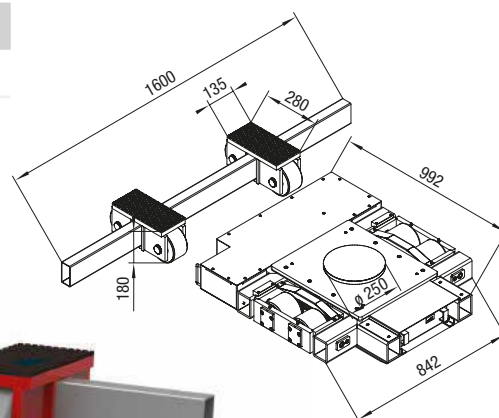
It is powered by a 24V Lithium Polymer power pack and a programmable motor control forwards the energy to the two brushless DC motors with a maximum of 930W of power each.

The torque is then transferred to the drive wheels via the transmission box and gearing.

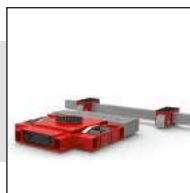
Operating signals are transmitted from the remote control to the motor control unit via a CAN Bus and the current operating state is shown on a display.

The overall system consists of a powered steerable L-ROBOT and the non-driven rigid F-ROBOT. Thus, our proven 3-point support concept. The system operates at two speeds: 11 and 5.5m/min.

| Technical data | L-ROBOT-5 | F-ROBOT-5 |
|--|--------------------------|-------------------------|
| Item number | 14242 | 13806 |
| Drive | DC motor (24V / 930 W) | – |
| Rechargeable battery | Lithium-Polymer | – |
| Reversing signal | Yes | – |
| Incline max. ** | 5 % | – |
| Loading height / number of special heavy-duty wheels | 180 mm / 4 (105 mm wide) | 180 mm / 4 (85 mm wide) |
| Dimensions (L x W x H) | 992 x 842 x 180 mm | – |
| Contact surface | Ø 250 | 135 x 280 mm |
| Connecting rod adjustable | – | 450-1600 mm |
| Total weight in kg | 240 kg | 110 kg |
| Load Capacity | 50 kN (5 t) | 50 kN (5 t) |
| Total load capacity | 100 kN (10 t) | |



** Use a locking device to prevent inadvertent rolling at inclines



Transport Module ROBOT-20 ►► For heavy loads up to 20 tons

Features:

- Remote operation via the transmitter on the radio remote control is carried out with two toggle switches for forward and reverse travel
- Proportional travel speed control. Turning the L-ROBOT on the spot under the load is possible. If interference by other frequencies is detected, the control switches off
- Options: Quick-charge unit (4h), charging station for wall mounting, transport box, spare batteries set, toe jack V15 with extended stroke (270 mm)



Contents

Hydraulic
Toe Jacks

Pumps

Transport Trolleys

Rotating Trolleys

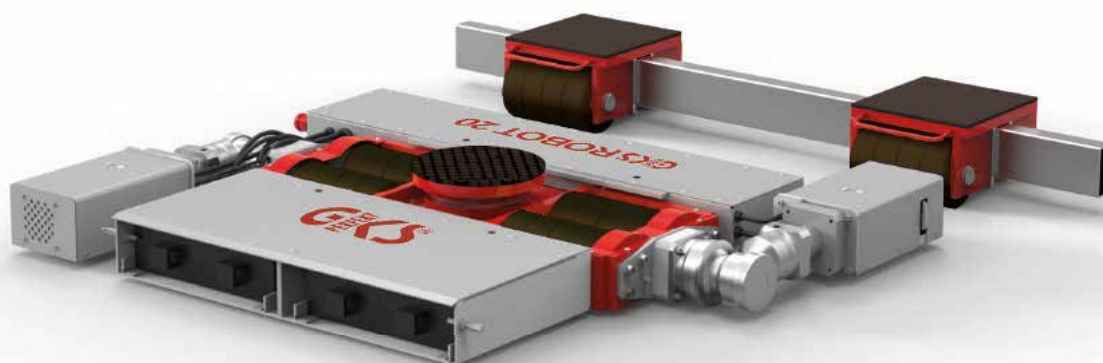
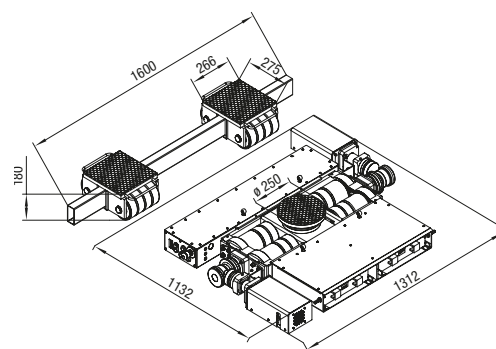
Transport Module
ROBOT

Wheels

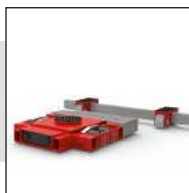
Special
Transport Trolleys

Repair
Services

| Technical data | L-ROBOT-10 | F-ROBOT-10 |
|--|------------------------------------|-----------------------------|
| Item number | 14080 | 14081 |
| Drive | DC motor (24 V / 1000 W) | — |
| Rechargeable battery | Lithium-Polymer | — |
| Reversing signal | Yes | — |
| Incline max. ** | 3 % | — |
| Loading height / number of special heavy-duty wheels | 180 mm / 4 + 8 (105/53 mm wide) | 180 mm / 18 (53 mm wide) |
| Dimensions (L x W x H) | 1132 x 1312 x 180 mm | — |
| Contact surface | Ø 250 | 275 x 266 mm |
| Adjustable connect- ing rod | — | 532-1600 mm |
| Total weight in kg | 255 kg | 115 kg |
| Load Capacity | 100 kN (10 t) | 100 kN (10 t) |
| Total load capacity | 200 kN (20 t) | |



** Use a locking device to prevent inadvertent rolling at inclines



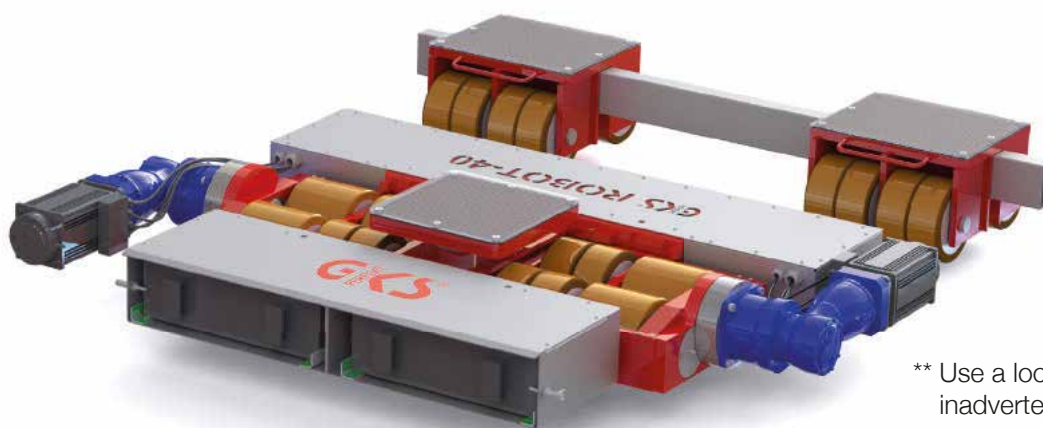
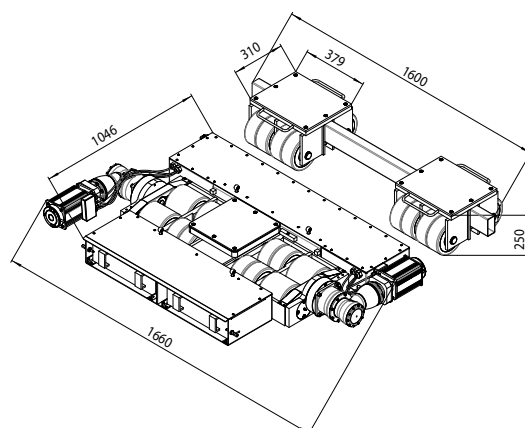
Transport Module ROBOT-40 ►► For heavy loads up to 40 tons

Features:

- Remote operation via the transmitter on the radio remote control is carried out with two toggle switches for forward and reverse travel
- Proportional travel speed control. Turning the L-ROBOT on the spot under the load is possible. If interference by other frequencies is detected, the control switches off
- Optional **Stroke Turntable** L-ROBOT-20 (40 mm stroke)
- Optional synchronous function for exact straight driving
- Options: Quick-charge unit (4h), charging station for wall mounting, transport box, spare batteries set, toe jack V15 with extended stroke (270 mm)



| Technical data | L-ROBOT-20 | F-ROBOT-20 |
|--|-------------------------------------|-----------------------------|
| Item number | 13735 | 13636 |
| Drive | AC motor (24 V / 1.5 kW) | — |
| Rechargeable battery | Lithium-Polymer | — |
| Reversing signal | Yes | — |
| Incline max. ** | 3 % | — |
| Loading height / number of special heavy-duty wheels | 250 mm / 4 + 8 (154+ 76 mm wide) | 250 mm / 16 (76 mm wide) |
| Dimensions (L x W x H) | 1046 x 1660 x 250 mm | — |
| Contact surface | 320 x 320 mm | 310 x 379 mm |
| Adjustable connecting rod | — | 758-1600 mm |
| Total weight in kg | 460 kg | 140 kg |
| Load Capacity | 200 kN (20 t) | 200 kN (20 t) |
| Total load capacity | 400 kN (40 t) | |



** Use a locking device to prevent inadvertent rolling at inclines



ROBOT Applications



- 1 ROBOT-40 magnet for particle accelerator
- 2 ROBOT-40 Windhoff conveyor transport wagon - hydraulic failure
- 3 ROBOT-10 pressure diecast equipment on platform with "drive and lift"
- 4 ROBOT-40 under 40-foot container with approx. 37 t
- 5 ROBOT-10 magnetic accelerator 9 t